



« **Edge-airport & Services** » provides services and the software suite known under the name « **Airport Manager** » .

Since 1994, « **Airport Manager** » is deployed toward domestic and International airports. Our products range and services have expanded over the years. Our customer base has enjoyed a steady growth.

Edge-airport delivers solutions that enable airports to lower costs, increase business agility and ensure freedom of choice. Our solutions allow airports to accelerate the transition to the latest version of the IATA/CUPPS specifications.

- Aeronautical software suite
- Airport systems such as « Common use », « FIDS » and « Local-DCS »
- Hardware
 - Servers and workstations
 - Peripherals such as AEA printers, Boarding Gate Readers
 - Information Displays
- Computer and network services
 - Lan & telecoms
 - Training
 - Maintenance

- **Airport Management software suite**
 - Aeroanautical billing & reporting
 - Accounting & Payroll
- **Airport Systems**
 - Cupp-T Common Use Passenger Processing Technology
 - latatext Type-B message system (MVT, LDM, PNL, etc)
 - Local Departure Control System (L-DCS)
 - FIDS Flight Information Display System
- **Services**
 - Full installation on site
 - Training
 - Technical assistance





Customer References

Edge airport company thanks airports and airlines who have chosen the **Airport Manager** software suite :

More than 40 airports in France and abroad have made this choice.

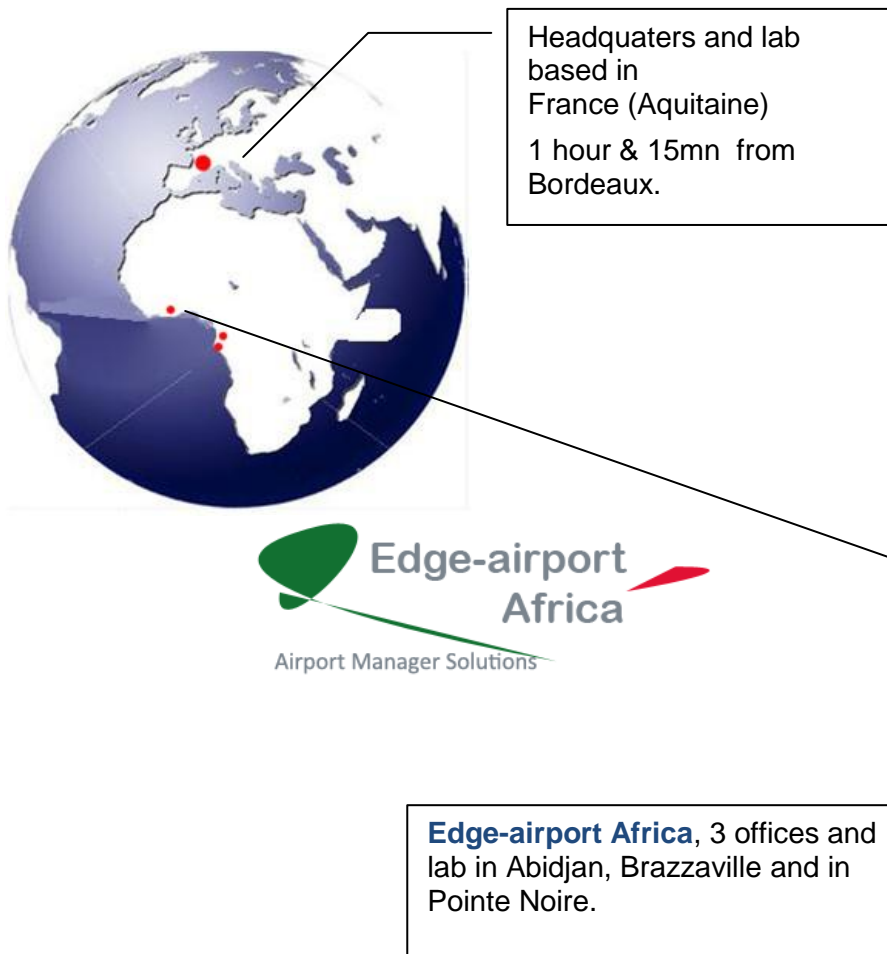
Airport Manager software suite are deployed in the following countries :

France
French Polynesia (Tahiti)
Morocco
Cote d'Ivoire
Congo

History & Experience

- **1994 - First Airport Manager version**
 - Billing & Reporting
 - Airport Manager software has been deployed onto several airports in France
- **1996 - First International airport in Ivory Coast : Abidjan**
- **2001 – Flight Information Display Information**
 - Deployed at Bergerac airport
- **2004 - Local Departure Control System & IATATEXT**
 - Support AEA
 - Support Eborders (2008)
- **2009 – « Common Use »**
 - Sharing Equipments with DCS applicaitons
- **2010 – Creating the Company Edge-airport & Services**
 - Partnership with French Polynesian airports (Tahiti)
- **2011 – Partnership with Congo airports**
 - Brazzaville
 - Ewo
 - Pointe Noire
 - Ollombo

Edge-airport Africa offices in Abidjan, in Brazzaville and in Pointe Noire.



- **Siège social basé en Aquitaine (Dordogne)**
 - Zae les lèches
 - 24 400 Mussidan
 - 5 x ingénieurs en recherche et développement
- **Abidjan**
 - Direction **Edge-airport Africa** représentée par Jean Luc Kolosinski
 - 4 ingénieurs réseau informatique
- **Brazzaville**
 - 6 techniciens réseau informatique et télécoms
- **Pointe Noire**
 - 5 techniciens réseau et

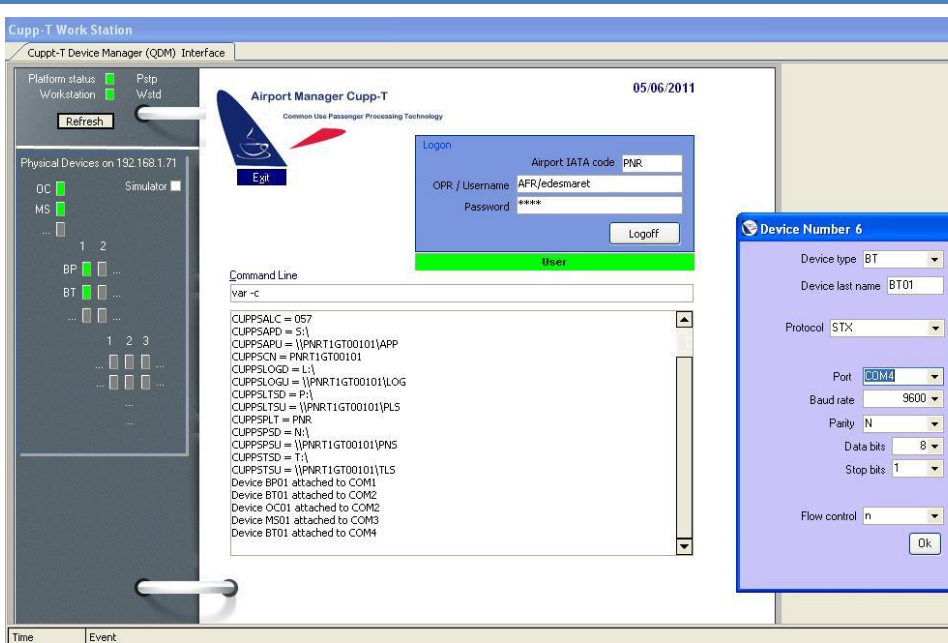
Strategy

Airport Manager has designed a new « common use » software named « Cupp-T » that allows airlines and other operators such as ground handling companies to share the same work stations and peripherals, improving the efficiency of airport resources.

It is scalable to any number of work stations and it includes quick and easy deployment at locations over local network.

Airport Manager Cupp-T provides a low-cost platform for supporting :

- Departure Control System applications (DCS),
- Enterprise Resource Planning applications (ERP),
- **Local-Departure Control System** such as **Airport Manager L-DCS**.



« **Cupp-T** » The new « *Common Use* » generation.

Airport Manager Cupp-T allows airlines and other operators such as ground handling companies to share the same work stations and peripherals, improving the efficiency of airport resources.

Key Features

- Each workstation is with Windows XP-Professional Service Pack 3.
- The « Cupp-T » secured front-office may replace the Windows shell.
- By using the serial interface, External DCS applications do not need to do development for integration. Cuppt may include specific firmware that used to be within the devices.



High Security Level

- User authentication through LDAP (Lightweight Directory Access Protocol)
- Only authenticated applications can be run on the platform
- Secured access to devices such as printers, boarding gate readers, ...

Interoperability & Compatibility

- Load and Play applications (LnP)
- Virtualized applications
- Web Hosted Applications
- Provides a hardware abstraction layer that allows usage of various certified peripherals.

User friendly interface

- External application exchanges XML data with Cupp-T through TCP/IP,
- Peripherals are handled with socket-IP



« **Cupp-T** » provides 3 ways for integrating external DCS applications :

1. **The virtual serial interface** for handling directly up to 15 serial devices. This is the low level interface.
2. The IP / XML interface that uses simplified XML messages for handling devices.
3. The **IATA CUPPS interface** that has been designed according to the **IATA recommended practice 1797**.



Local Departure Control System

Airport Manager LDCS is an automated airport check-in system, enabling rapid passenger processing. Each single desk can handle multiple flight check-in and boarding. The application handles a variety of devices such as :

- Passport and card reader (Optical Character Reader and Magnetic Stripe Reader)
- Barcode reader that improves the efficiency of web check-in operations
- Support AEA Printers, RAW printers and Document printers
- Boarding Gate Reader (one workstation can handle up to 3 BGR for fast boarding).
- Support Eboards.

latatext – Type B messaging solution



Ideal for airlines, caterers, ground handlers, cargo operations, and flight dispatch operators, **latatext** is user friendly and highly versatile. Communication among Type B, e-mail is fast and easy.

- Cost efficient.
- SMTP/POP3 enabled software
- Maximizes operational efficiency and ultimately lowering your costs.
- Extract flight information data from messages
- Template messages



Flight Information Display System

Airport Manager FIDS is a user-friendly flight Information Display Systems based on the HTML technology. It can be delivered with our other optional airport software such as Aeronautical Billing and Reporting, Local-DCS and Cupp-T Common use platform.

Key benefits

- Improves passenger service with accurate flight information
- Displays multi-lingual flight information
- Provides flight information on airport web site
- Makes easy the system management by using the supervision functions
- Reduce the energy cost by using automatically turn-off and turn-on functions.

Local-DCS

- Easy to integrate to the Cupp-T platform.
- « Fast boarding » system by using up to 3 boarding gate readers (2 wired + 1 wireless).

latatext

- Type-B messaging software. Let you receive and send operational messages such as (MVT, LDM, PFS, PTM, etc) through a simple internet connection.

FIDS – Flight Information Display System

Flight Information Management System

Multimedia display functions

- FIDS supervision; monitoring of all displays from any administrator work station.